

TradeTip 2

First class finishes with the right **nozzle** and **gun filter!**



NOZZLE MARKING

The nozzle marking identifies the spraying angle and the orifice size (orifice determines flow-rate). Example: nozzle 517

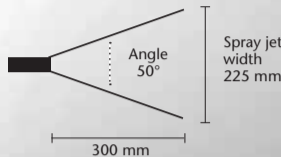
Bore
0,017 inches
Angle 50°

Integral tool for easy insertion and changing of the double seal.

Clear indication of the spraying direction or cleaning position.

SPRAY JET WIDTH

- The ideal distance from the object is always around 30 cm.
- The nozzle angle determines the spray width e.g. 225 mm with the 517 nozzle.



GUN FILTERS

There is a gun filter to suit every nozzle. By selecting the correct size filter you avoid tip blockages and ensure a good result.

- Filter 180 mesh extra fine
- Filter 100 mesh fine
- Filter 50 mesh medium
- Filter 30 mesh coarse



APPLICATION	NOZZLE-MARKING	BORE INCHES (MM)	SPRAYING ANGLE	SPRAY JET WIDTH ¹	Order Ref. No.	GUN-FILTERS	
Water and solvent based lacquers and paints, oils, release agents	7	107	0,007 (0,18)	10 °	100	0552 107	■
		207	0,007 (0,18)	20 °	120	0552 207	■
		307	0,007 (0,18)	30 °	150	0552 307	■
	9	407	0,007 (0,18)	40 °	190	0552 407	■
		109	0,009 (0,23)	10 °	100	0552 109	■
		209	0,009 (0,23)	20 °	120	0552 209	■
		309	0,009 (0,23)	30 °	150	0552 309	■
		409	0,009 (0,23)	40 °	190	0552 409	■
		509	0,009 (0,23)	50 °	225	0552 509	■
Synthetic enamels lacquers	11	609	0,009 (0,23)	60 °	270	0552 609	■
		111	0,011 (0,28)	10 °	100	0552 111	■
		211	0,011 (0,28)	20 °	120	0552 211	■
		311	0,011 (0,28)	30 °	150	0552 311	■
		411	0,011 (0,28)	40 °	190	0552 411	■
Lacquers, primers, base coats, fillers	13	511	0,011 (0,28)	50 °	225	0552 511	■
		611	0,011 (0,28)	60 °	270	0552 611	■
		113	0,013 (0,33)	10 °	100	0552 113	■
		213	0,013 (0,33)	20 °	120	0552 213	■
		313	0,013 (0,33)	30 °	150	0552 313	■
		413	0,013 (0,33)	40 °	190	0552 413	■
Fillers, anticorrosion paints	15	513	0,013 (0,33)	50 °	225	0552 513	■
		613	0,013 (0,33)	60 °	270	0552 613	■
		813	0,013 (0,33)	80 °	330	0552 813	■
		115	0,015 (0,38)	10 °	100	0552 115	■
		215	0,015 (0,38)	20 °	120	0552 215	■
		315	0,015 (0,38)	30 °	150	0552 315	■
		415	0,015 (0,38)	40 °	190	0552 415	■
		515	0,015 (0,38)	50 °	225	0552 515	■
Anticorrosion paints, latex paints, emulsions	17	615	0,015 (0,38)	60 °	270	0552 615	■
		715	0,015 (0,38)	70 °	300	0552 715	■
		815	0,015 (0,38)	80 °	330	0552 815	■
		117	0,017 (0,43)	10 °	100	0552 117	■
		217	0,017 (0,43)	20 °	120	0552 217	■
	19	317	0,017 (0,43)	30 °	150	0552 317	■
		417	0,017 (0,43)	40 °	190	0552 417	■
		517	0,017 (0,43)	50 °	225	0552 517	■
		617	0,017 (0,43)	60 °	270	0552 617	■
		717	0,017 (0,43)	70 °	300	0552 717	■
Fire-retardant coatings	21	817	0,017 (0,43)	80 °	330	0552 817	■
		219	0,019 (0,48)	20 °	120	0552 219	□
		319	0,019 (0,48)	30 °	150	0552 319	□
		419	0,019 (0,48)	40 °	190	0552 419	□
		519	0,019 (0,48)	50 °	225	0552 519	□
		619	0,019 (0,48)	60 °	270	0552 619	□
		719	0,019 (0,48)	70 °	300	0552 719	□
		819	0,019 (0,48)	80 °	330	0552 819	□
		919	0,019 (0,48)	90 °	385	0552 919	□
		Roof coatings	23	221	0,021 (0,53)	20 °	120
321	0,021 (0,53)			30 °	150	0552 321	□
421	0,021 (0,53)			40 °	190	0552 421	□
521	0,021 (0,53)			50 °	225	0552 521	□
621	0,021 (0,53)			60 °	270	0552 621	□
721	0,021 (0,53)			70 °	300	0552 721	□
821	0,021 (0,53)			80 °	330	0552 821	□
921	0,021 (0,53)			90 °	385	0552 921	□
Thick film materials, anticorrosion paints, spray plasters	25	223	0,023 (0,58)	20 °	120	0552 223	□
		323	0,023 (0,58)	30 °	150	0552 323	□
		423	0,023 (0,58)	40 °	190	0552 423	□
		523	0,023 (0,58)	50 °	225	0552 523	□
		623	0,023 (0,58)	60 °	270	0552 623	□
	27	723	0,023 (0,58)	70 °	300	0552 723	□
		823	0,023 (0,58)	80 °	330	0552 823	□
		225	0,025 (0,64)	20 °	120	0552 225	□
		325	0,025 (0,64)	30 °	150	0552 325	□
		425	0,025 (0,64)	40 °	190	0552 425	□
	29	525	0,025 (0,64)	50 °	225	0552 525	□
		625	0,025 (0,64)	60 °	270	0552 625	□
		725	0,025 (0,64)	70 °	300	0552 725	□
		825	0,025 (0,64)	80 °	330	0552 825	□
		227	0,027 (0,69)	20 °	150	0552 227	■
	31	427	0,027 (0,69)	40 °	190	0552 427	■
		527	0,027 (0,69)	50 °	225	0552 527	■
		627	0,027 (0,69)	60 °	270	0552 627	■
		827	0,027 (0,69)	80 °	330	0552 827	■
		529	0,029 (0,75)	50 °	225	0552 529	■
33	629	0,029 (0,75)	60 °	270	0552 629	■	
	231	0,031 (0,79)	20 °	120	0552 231	■	
	331	0,031 (0,79)	30 °	150	0552 331	■	
	431	0,031 (0,79)	40 °	190	0552 431	■	
	531	0,031 (0,79)	50 °	225	0552 531	■	
35	631	0,031 (0,79)	60 °	270	0552 631	■	
	731	0,031 (0,79)	70 °	300	0552 731	■	
	831	0,031 (0,79)	80 °	330	0552 831	■	
	433	0,033 (0,84)	40 °	190	0552 433	■	
	533	0,033 (0,84)	50 °	225	0552 533	■	
39	633	0,033 (0,84)	60 °	270	0552 633	■	
	235	0,035 (0,90)	20 °	120	0552 235	■	
	335	0,035 (0,90)	30 °	150	0552 335	■	
	435	0,035 (0,90)	40 °	190	0552 435	■	
	535	0,035 (0,90)	50 °	225	0552 535	■	
Heavy duty applications	43	635	0,035 (0,90)	60 °	270	0552 635	■
		735	0,035 (0,90)	70 °	300	0552 735	■
		835	0,035 (0,90)	80 °	330	0552 835	■
		539	0,039 (0,99)	50 °	225	0552 539	■
		243	0,043 (1,10)	20 °	120	0552 243	■
52	443	0,043 (1,10)	40 °	190	0552 443	■	
	543	0,043 (1,10)	50 °	225	0552 543	■	
	252	0,052 (1,30)	20 °	120	0552 252	■	
	552	0,052 (1,30)	50 °	225	0552 552	■	
	261	0,061 (1,55)	20 °	120	0552 261	■	
61	461	0,061 (1,55)	40 °	190	0552 461	■	
	263	0,063 (1,60)	20 °	120	0552 263	■	
	463	0,063 (1,60)	40 °	190	0552 463	■	
	267	0,067 (1,70)	20 °	120	0552 267	■	
63	467	0,067 (1,70)	40 °	190	0552 467	■	
	67						

¹ Spray jet width (mm) at around 30 cm distance from the object and 100 bar pressure, using synthetic resin lacquer at 20 DIN seconds viscosity.

TipClean

Cleans and protects your nozzles in a flash.



Before ...



...After!



Only clean nozzles ensure trouble-free working and the best spraying results. Cleaning with TipClean immediately after use is best.

TradeTip 2

WideFinish



Special nozzle with extra wide spray jet

- Optimal coverage and clean edges
- Efficient large area coating
- Wide working spectrum

angle 120°

NOZZLE-MARKING	BORE INCHES (MM)	SPRAYING ANGLE	SPRAYJET WIDTH	Order Ref. No.
1219	0,019 (0,48)	120°	610	057 1219
1221	0,021 (0,53)	120°	610	057 1221
1223	0,023 (0,58)	120°	610	057 1223
1225	0,025 (0,64)	120°	610	057 1225
1227	0,027 (0,69)	120°	610	057 1227
1229	0,029 (0,75)	120°	610	057 1229
1231	0,031 (0,79)	120°	610	057 1231
1233	0,033 (0,84)	120°	610	057 1233
1235	0,035 (0,90)	120°	610	057 1235
1237	0,037 (0,94)	120°	610	057 1237

TradeTip 2

FineFinish



Top quality painting nozzle for particularly high-grade finishes

- Optimal atomisation even at low pressure ranges
- Easy to use
- First class painting quality

NOZZLE-MARKING	BORE INCHES (MM)	SPRAYING ANGLE	SPRAYJET WIDTH ¹	Order Ref. No.
208	0,008 (0,20)	20°	120	0556 208
308	0,008 (0,20)	30°	150	0556 308
408	0,008 (0,20)	40°	190	0556 408
210	0,010 (0,25)	20°	120	0556 210
310	0,010 (0,25)	30°	150	0556 310
410	0,010 (0,25)	40°	190	0556 410
510	0,010 (0,25)	50°	225	0556 510
212	0,012 (0,30)	20°	120	0556 212
312	0,012 (0,30)	30°	150	0556 312
412	0,012 (0,30)	40°	190	0556 412
512	0,012 (0,30)	50°	225	0556 512
612	0,012 (0,30)	60°	270	0556 612
214	0,014 (0,36)	20°	120	0556 214
314	0,014 (0,36)	30°	150	0556 314
414	0,014 (0,36)	40°	190	0556 414
514	0,014 (0,36)	50°	225	0556 514
614	0,014 (0,36)	60°	270	0556 614

¹ Spray jet width (mm) at around 30 cm distance from the object and 100 bar pressure, with synthetic resin lacquer, 20 DIN sec..



TradeTip 2

LineFinish



Special nozzle for interior and exterior line-marking work

- Large selection of nozzles with different spray jet widths
- Clean lines
- Sharp edges giving precise borders to the lines

NOZZLE-MARKING	BORE INCHES (MM)	LINE WIDTH	Order Ref. No.
1504	0,015 (0,38)	up to 70 mm	056 1504
1508	0,015 (0,38)	up to 140 mm	056 1508
1704	0,017 (0,43)	up to 70 mm	056 1704
1708	0,017 (0,43)	up to 140 mm	056 1708
1712	0,017 (0,43)	up to 210 mm	056 1712
1904	0,019 (0,48)	up to 70 mm	056 1904
1908	0,019 (0,48)	up to 140 mm	056 1908
1912	0,019 (0,48)	up to 210 mm	056 1912
2108	0,021 (0,53)	up to 140 mm	056 2108
2112	0,021 (0,53)	up to 210 mm	056 2112
2308	0,023 (0,58)	up to 140 mm	056 2308
2328	0,023 (0,58)	up to 300 mm	056 2328

Application-Tips

„Spraying“

Large area spraying of penetrating stopper and wallpaper strippers with the 629 nozzle - best at a working pressure between 10 and 25 bar and a 15 cm nozzle extension.

„Edge cut-off“

Easy cut-off when applying emulsion with the 111 nozzle by use of a yellow gun filter and a 15 cm nozzle extension.

TradeTip 2 - Accessories



Accessories	F-thread	G-thread
Nozzle extension complete 15 cm	0556 051	0556 074
Nozzle extension complete 30 cm	0556 052	0556 075
Nozzle extension complete 45 cm	0556 053	0556 076
Nozzle extension complete 60 cm	0556 054	0556 077
Swivel elbow joint	0097 009	

Accessories	Order Ref. No.
Nozzle extension complete 1 m with swivel elbow joint	0096 015
Nozzle extension complete 2 m with swivel elbow joint	0096 016
Nozzle extension complete 3 m with swivel elbow joint	0096 017

Accessories	Order Ref. No.
Push-in filter, extra fine, 180 M; 0.084 mm MW, red	0097 022
Push-in filter, fine, 100 M; 0.140 mm MW, yellow	0097 023
Push-in filter, medium, 50 M; 0.315 mm MW, white	0097 024
Push-in filter, coarse, 30 M; 0.560 mm MW, green	0097 025

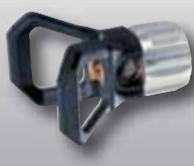
TipClean container inc. special cleaner	0097 108
TipClean Box (24 off)	0097 109
Special cleaner for TipClean (1 litre)	0097 110



www.wagner-group.com

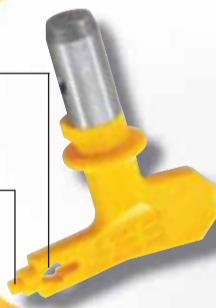
Order ref. numbers	Order Ref. No.
TradeTip2 holder - F-thread	0556 042
TradeTip2 holder - G-thread	0556 041
TradeTip2 holder M18 x 1.5 thread	0556 040
Double seal set (5 off)	0556 037

- TradeTip 2
- Nozzle holder
- compact
- released by hand
- unbreakable
- Lightweight construction



- PERFECT SPRAY PATTERN
- LONG LIFE
- SPECIAL NOZZLES

Ingenial tool:
Easy insertion and changing of the double seal.
Clear indication of the spraying direction or cleaning position.



TradeTip 2 airless nozzle system



Professional Finishing



TradeTip 2

Airless nozzle system

1x1